



SUPER MIDDLE EAST

FREIGHT & LOGISTICS CO. W.L.L.

www.smekwt.net

TABLE OF CONTENT

01
PAGE



ABOUT US

02
PAGE



SEA FREIGHT

03
PAGE



NVOCC

04
PAGE



LCL CONSOLIDATION

05
PAGE



AIR FREIGHT

06
PAGE



LAND FREIGHT & D.G CARGO

07
PAGE



PROJECT CARGO

08
PAGE



CROSS TRADE SHIPMENT

09
PAGE



PACK 'N' MOVE

10
PAGE



WAREHOUSING

11
PAGE



CUSTOMS CLEARANCE

About US

Super Middle East Freight & Logistics CO.W. L. L. is one of the leading forwarding companies in Kuwait. With our aggressive & productive team, we control a good share of Kuwait market in Air Freight, Sea Freight, Land Freight, Custom Clearance, Warehousing & other related logistic services that touch on all aspects of the supply chains. Our global network with international freight companies of high repute enables us to offer unmatched freight forwarding & logistics services in undertaking, handling of cargo of all shapes & sizes. Super Middle East (SME) implies a strong dedication to offer the most reliable & cost-effective services to the clients which accomplish a competitive advantage toward excellence. We fully understand the requirements of our clients and provide a solution tailored to their needs.



MISSION:

- With a prime determination to offer most efficient, reliable & quality services to our valued customers.



VISION :

- To be the best shipping provider worldwide through our freight & logistics services.

OUR PARENT COMPANIES



RISEONIC SHIPPING & LINES

www.rsluae.com
Dubai, United Arab Emirates



RISEONIC REALTY REAL ESTATE

www.riseonic.ae
Dubai, United Arab Emirates



1 Roadway Inn

801 S Main St, Plankinton, SD 57368, United States
Ashiq LLC



2 Roadway Inn

1313 S Ohlman St, Mitchell, SD 57301, United States
Ashiq \$ Saleem LLC



Knights Inn Winner

845 SD-44, Winner, SD 57580, United States
Yasir and Siddique LLC





SEA FREIGHT

- International Sea Freight Forwarding
- LCL and FCL
- RORO (Roll on Roll off)
- Bulk and Break-Bulk Cargo
- Door to Door and Port to Port
- Groupage Services & Containerized Cargo
- Multi Supplier to Single Consignee Consolidation
- Heavy Mechanical Equipment's
- Containers 20FT & 40FT: Standard, High Cube, Hard Top, Open Top, Flat Racks, Plat Forms (Plats), Ventilated, Insulated & Refrigerated Containers.





NVOCC

NVOCC and Freight Forwarder are used to mean the same entity though there are certain differences between the two. Non-Vessel Operating Common Carriers (NVOCC) does not own or operate ocean transport vessels. Instead, they make arrangements with ship owners, charterers or shipping lines for transportation of cargo under their own Bill of Lading known as the House Bill of Lading (HBL). With NVOCC and Freight Forwarding services managed by a single point of contact coupled with our online track & trace system, you receive a level of service that's second to none. NVOCC are often in a better position to give you a lower rate than a mainline shipping agency. Small business owners by themselves would not be able to obtain this reduced rate if they directly contacted a shipping line. Call us today and let one of our NVOCC specialists show you how worry-free is international shipping.

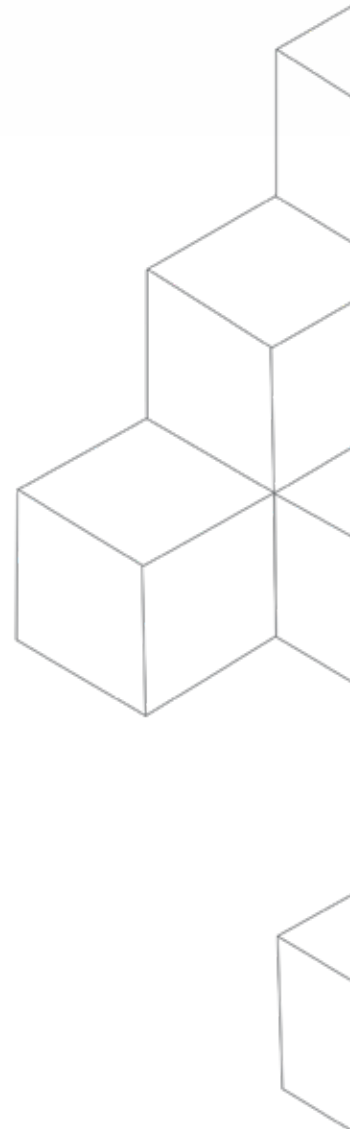
PERFECT COMPANY WITH PERFECT SOLUTIONS



LCL CONSOLIDATION

Super Middle East offers efficient transport solutions for your shipments of Its LCL Consolidation to various Origins/Destinations. For small to medium size businesses, LCL often is the most cost-effective and logistically sound method of shipping freight internationally. Therefore, most companies with smaller cargo volumes choose the LCL services and pay for the space in the container that their goods require, sharing with the rest. Once you've chosen the container type, you must measure CBM & weight of your cargo, taking into account length of travel. From there, we calculate the space used & your cargo is collected. Something to consider: with LCL, you have no say about the other type of cargo that's in the container with your freight. Also, there may be unpreventable delays since multiple entities are utilizing the container. LCL is budget friendly, if you don't have a large enough cargo volume, LCL is often the cheapest and easiest way to ship internationally. LCL is very flexible and thus used by companies with smaller cargo volumes.

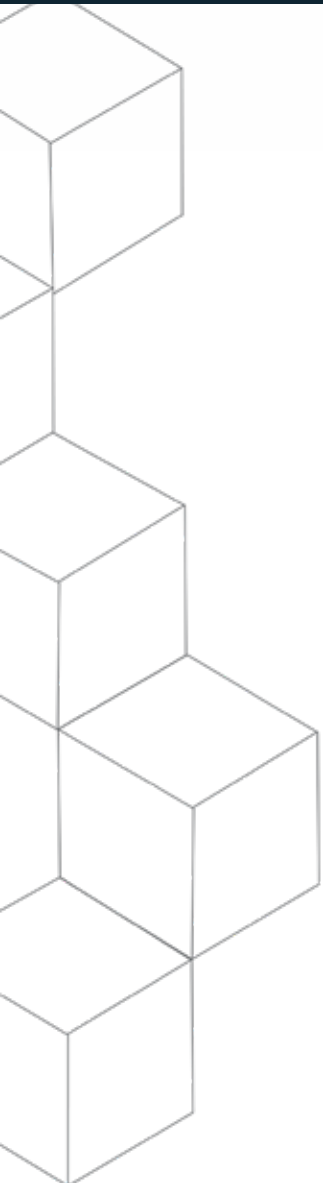
LCL- AN ANCHOR IN NEW ERA





AIR FREIGHT

- International Air Freight Forwarding
- General and Dry Cargo
- Live Animals
- Dangerous Cargo (Hazardous Cargo)
- Inflammable Cargo
- Worldwide Air Freight Door to Door Import & Export
- Chemical Products
- Multi Supplier to Single Consignee Consolidation
- Perishable Cargo
- Worldwide Express Courier Services Door to Door - Inbound & Outbound





LAND FREIGHT

- GCC and Neighboring Countries Delivery Services
- Local Move Transportation
- Certified Fork-Lifts up to 25 Tons
- Half Lorry and Pickups for light Shipments
- Multi Supplier to Single Consignee Consolidation
- Less Truck Load (LTL) and Full Truck Load (FTL)
- Certified Mechanical and Hydraulic Cranes up to 300 Tons
- Certified Trailers for Petrochemical, Oil, Gas and Government Sectors
- Trailers: Dry Van & Enclosed, Standard Flatbed, Low bed, Side-Kit, Drop-Deck/ Step-Deck, Gooseneck, Refrigerated (Reefer), Heavy haul, Car Carrier and Specialized Trailers.



DANGEROUS CARGO (DGR)

- Super Middle East is a global logistics company that offers complete dangerous & hazardous goods logistics services worldwide.
- Dangerous goods is a complex procedure & requires detailed good document known as MSDS that contains the current status of a package containing dangerous goods.
- SME provides wide variety of logistics services that supports & reassures our customers with all aspects of handling dangerous goods.
- Our DGR services includes DG Cargo Removal, Material, Packing, Re-Packing, Labeling, Declaration, Crating and Wrapping Services.



A DEDICATION THAT DRIVES THE GROWTH.



PROJECT CARGO

We are specialized in the delivery of complete customized Turnkey Solutions for your project cargo and our team of experts can advise you on the best option for your cargo. Our team pre-plans and will work with you to propose the most suitable end-to-end solution with high level industry expertise by managing all modes of transportation & equipments. These operations pose serious undertaking, regardless of the commodity size, weight or configuration, from its arrival to delivery to ensure the process is successful.

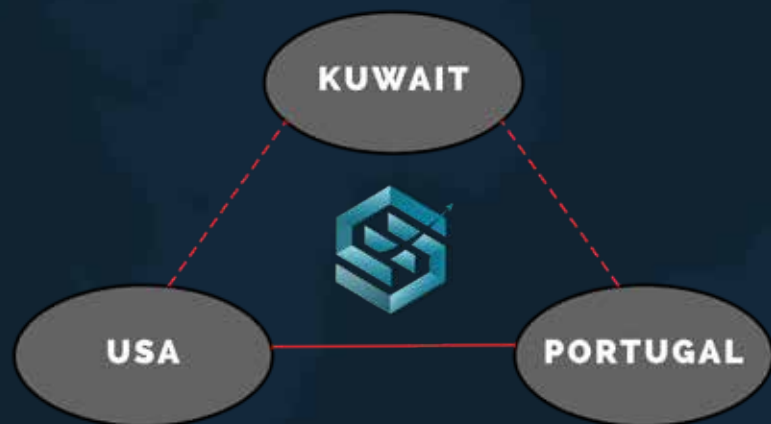
- RORO (Roll on Roll off)
- Conventional Vessel
- Ultra-Heavy Cargo by Land Transportation
- Coastal marine transportation
- Air and Marine Charter
- Inland water transport by barge
- Aerospace
- Turbines
- Military
- Delivery and on-site erection.
- Road survey and study
- Site Supervision

We are specialized in the delivery of complete customized Turnkey Solutions.

CROSS TRADE SHIPMENTS

This service is transported by either Air, Road, Sea or Railway from one country to another, they are also known as foreign-to-foreign shipments, but not through the Country-of-Origin base from where the business is conducted. It's called a 'triangle shipment' because there are three countries involved in the transaction - the country of origin, the collection country destination and delivery country destination. Cross trading has become very popular as more and more businesses enter into international markets. There are many reasons businesses use cross trades - all of which can end up saving your money in the long-term. Below are the reasons, exporters should use cross trades when selling their product overseas:

- Accessing new markets
- Lower supply chain costs
- Less transit times
- Efficiency in the supply chain
- Using a local forwarder



Pack 'n' Move

If you are ready to move to a new place in the city, you will need the help of professional moving services to make your move as smooth and stress-free as possible. With SME you are one step closer to living the life you envision for yourself in your city and/or country.

Local shifting:

We are specialized in both local and long-distance shifting services within Kuwait.

Domestic shifting:

We provide shifting services to different governorates in Kuwait (Al Asimah, Jahra, Hawally, Farwaniya, Mubarak Al Kabeer and Ahmadi).

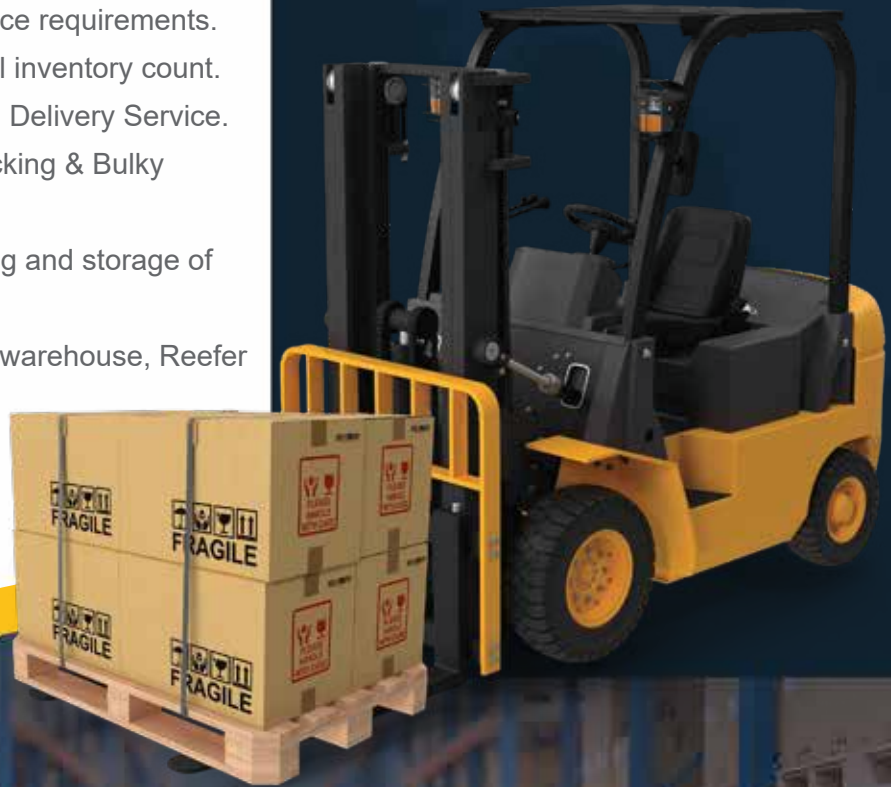
Office relocating:

We know office shifting is a time-bound process and our team can Pack, Unpack, Load and Unload all your office goods at a given time.



WAREHOUSING

- Visual inspection.
- Health and Safety.
- Picking and Packing.
- Storage is more Safekeeping.
- Transport management system.
- Organized Inventory Management.
- Material receiving and incoming inspection.
- Planning warehouse layout and space requirements.
- Inventory management and physical inventory count.
- Local and International Packing and Delivery Service.
- Pallet flow racking, Double deep racking & Bulky racking systems.
- Planned space with efficient handling and storage of goods and materials.
- Closed warehouse, Open yard, DG warehouse, Reefer warehouse and 2PL and 3PL.

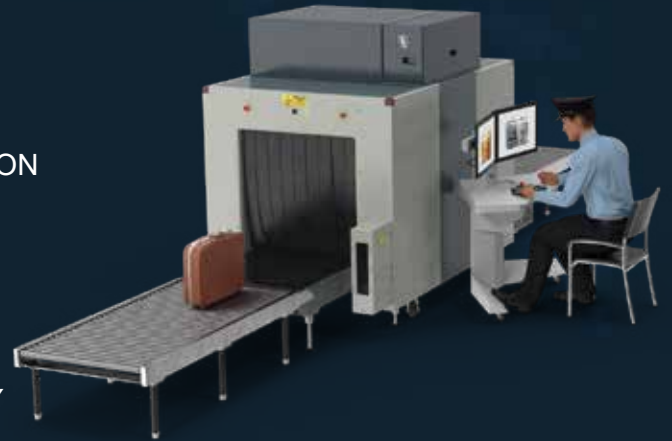


CUSTOMS CLEARANCE & DOCUMENTATION

Super Middle-East involves the preparation & submission of documentations required to facilitate export or imports into or out of the country, representing the client during customs examinations, assessments, payments of duties & co-taking the delivery of cargo from customs after clearance along with required documents. All international ocean freight shipments, be it an import or export, need to fulfill with the Kuwait customs clearance procedures of each country. Customs clearance is a customs formality required to permit the entry or exit of certain goods to/from a country and must be done by an authorized customs broker. This involves declaration certain information pertaining to the shipment being imported/exported as well as the parties involved in the process.

KUWAIT GENERAL ADMINISTRATION OF CUSTOMS APPROVALS

- MOH - MINISTRY OF HEALTH
- KM - KUWAIT MUNICIPALITY
- MOI - MINISTRY OF INTERIOR
- MOI - MINISTRY OF INFORMATION
- MOC - MINISTRY OF COMMUNICATION
- PAI - PUBLIC AUTHORITY FOR INDUSTRY
- PAFN - PUBLIC AUTHORITY FOR FOOD & NUTRITION
- PAAF - PUBLIC AUTHORITY OF AGRICULTURE
AFFAIRS & FISH RESOURCES
- EPA - ENVIRONMENT PUBLIC AUTHORITY
- MOCI - MINISTRY OF COMMERCE AND INDUSTRY
- KUCAS - KUWAIT CONFORMITY ASSURANCE SCHEME



SMKTE



www.smekwt.net , Fax: (+965) 22456608



info@smekwt.net , inquiry@smekwt.net



(+965) 22429703, (+965) 92210975



Salhiya Tower, 8th floor, Office No.2, P.O. Box 5061 Safat 13051 Kuwait - Fahad Al Salem Street - Opp: Panasonic Tower - Kuwait City, Kuwait.



in /smekwtofficial

@ /smekwtofficial

f /smekwtofficial

SME



www.smekwt.net , Fax: (+965) 22456608



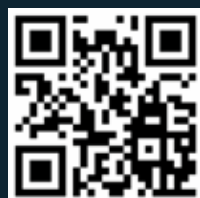
info@smekwt.net , inquiry@smekwt.net



(+965) 22429703, (+965) 92210975



Salhiya Tower, 8th floor, Office No.2, P.O. Box 5061 Safat 13051 Kuwait - Fahad Al Salem Street - Opp: Panasonic Tower - Kuwait City, Kuwait.



in /smekwtofficial

@ /smekwtofficial

f /smekwtofficial